

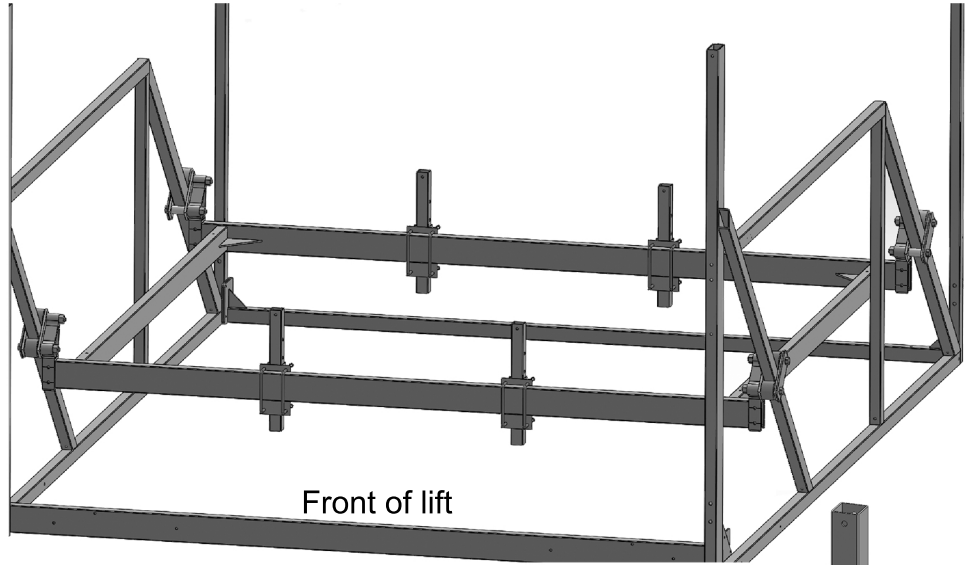
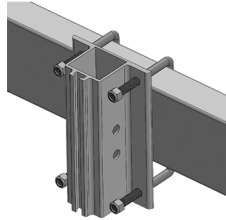
WOOD BUNKS 1540 INSTRUCTIONS

- 4- BUNK BRACKETS
- 4- BUNK UPRIGHT POSTS
- 4- WOOD BUNK ANGLE
- 8- 7/16" X 6 3/4" X 3 1/2" U-BOLTS

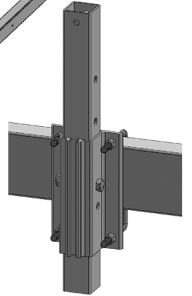
- 1- BOLT BAG CONTAINING:
- 4- 1/2" X 3" BOLTS
 - 4- 3/8" X 2 3/4" BOLTS
 - 8- 5/16" X 2 1/2" CARRIAGE BOLTS
 - 8- 3/8" FLAT WASHERS

- 4- 1/2" NYLOCK NUTS
- 8- 7/16" NYLOCK NUTS
- 4- 3/8" NYLOCK NUTS
- 8- 5/16" FINISH NUTS

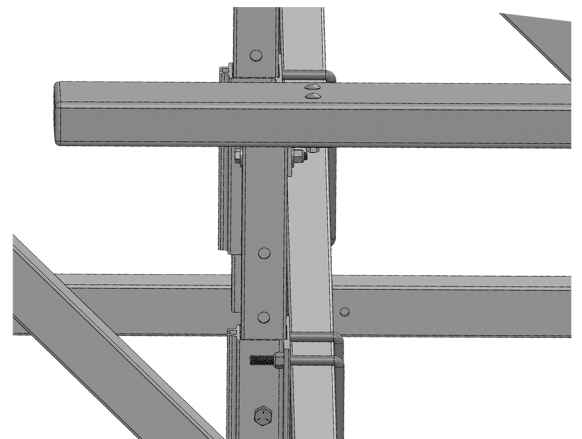
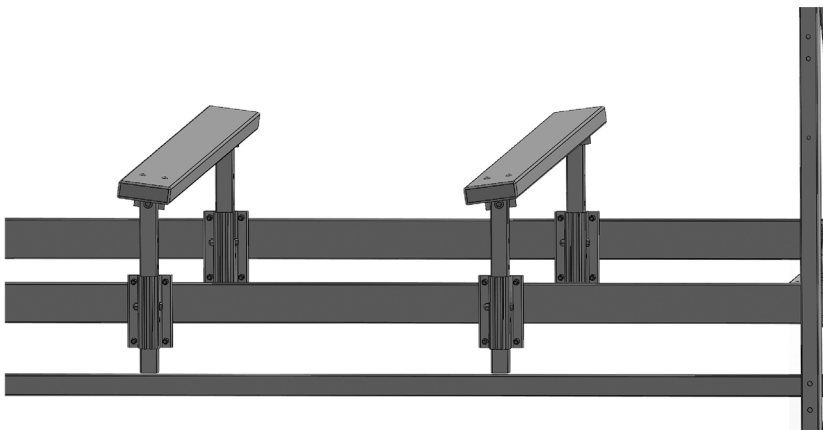
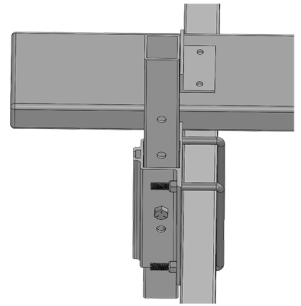
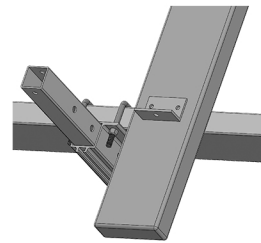
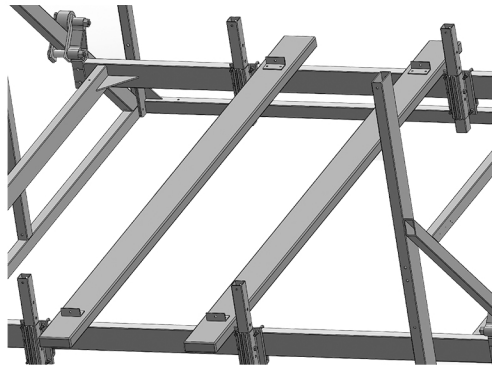
Bolt bunk brackets to rear side of load tubes of bed with 7/16" x 6 3/4" x 3 1/2" ubolts and nylock nuts. Leave the nuts loose until everything is bolted together. You can start with a center to center measurement of 40".



Bolt bunk uprights into brackets with 1/2" x 3" bolts and nylock nuts. You can start with a height that resembles your boat trailer bunk height.



Lay wood bunks upside down next to bunk brackets and center front to back. Set the bunk angles on top of the wood bunks even with the inside of the bunk upright tubes. Drill 5/16" holes through holes in angle through wood bunks. Bolt angles to wood bunks with 5/16" x 2 1/2" carriage bolts and 5/16" finish nuts.



Tighten all the bolts. Put boat on lift and check for clearances. Pull the boat off the lift and adjust as needed. The boat should be around a foot off the back of the lift and 1" above the bed.