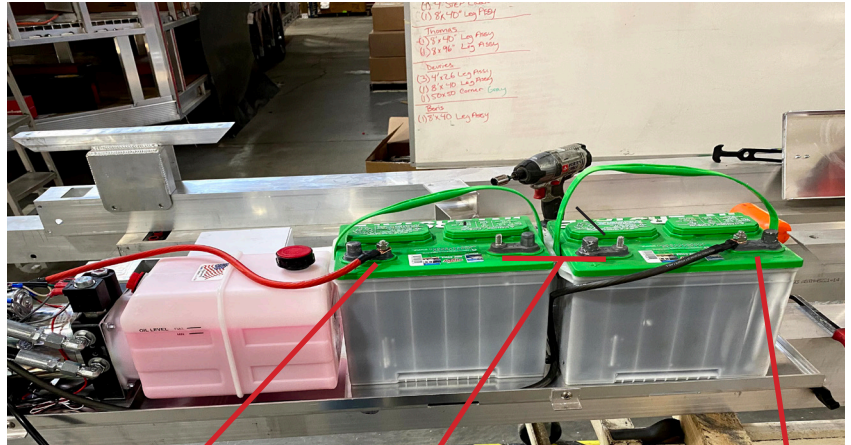


# HARBOR MASTER HYDRAULIC INSTALLATION & TROUBLESHOOTING

## BATTERY CONNECTION

The Harbor Master Hydraulic Motor is 24 volts. (Please ensure that the connection mirrors the image to the right.) Connecting to only 12 volts will destroy the pump motor.



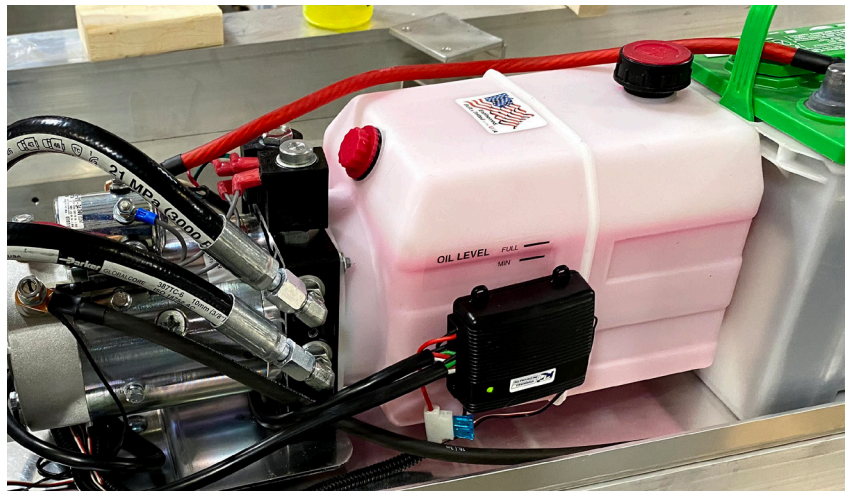
Connect to the Positive.

Connect 24v Jumper Wire.

Connect The Ground Wire.

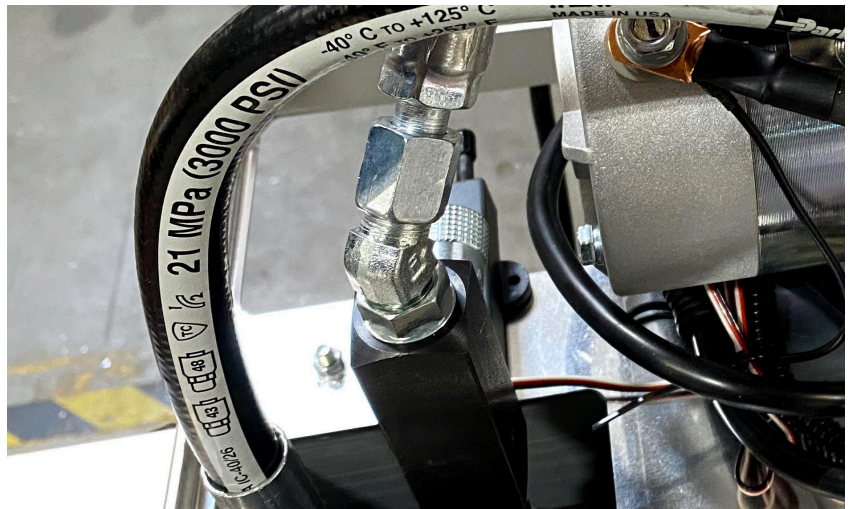
## FLUID LEVELS

Your Harbor Master Hydraulic Lift is delivered in the up position. (Cable is Retracted.) Fluid Level is full at this position. As cylinder extends, the fluid level will drop (1 to 2 inches.) Only Use Harbor Master Hydraulic Fluid. Not using harbor master hydraulic fluid will void the warranty, and may potentially cause serious damage to the pump & cylinder.



## DOWNFLOW VALVE

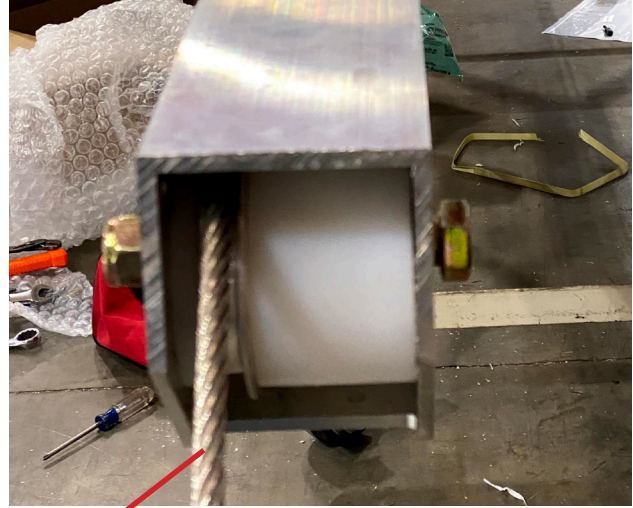
Downflow valve is set from the factory at 3/4 to 1 full turn from close. Tampering may cause damage to the pump and cylinder, or damage to your boat.



# HARBOR MASTER HYDRAULIC INSTALLATION & TROUBLESHOOTING

## CABLE POSITION FROM FACTORY

When initially installing hydraulic control tube onto the Harbor Master Lift, the cable needs to be pulled simultaneously while lowering the lift (extending the cylinder.) Failure to follow this procedure could cause damage or crimping of the cable inside the control tube as it extends towards the end of tube. The Cable and cylinder are set for the maximum and minimum lift height, and are not adjustable.



Pull Here When You Are Installing The Hydraulic Control Tube For The First Time. Extend the Cable Simultaneously.

## 24 VOLT BATTERY TERMINAL CONNECTION TO PUMP



Positive 24 Volt Terminal  
(Remote Positive Also Connects To This.)

Negative 24 Volt Ground Terminal  
(Remote Ground Also Connects To This.)