
HME 15100, 20100, 30108, 30120 40114, & 40120 INSTRUCTIONS



PLEASE READ THROUGH ALL OF THE INSTRUCTIONS BEFORE BEGINNING. DETERMINE WHICH SIDE YOU WOULD LIKE THE WINCH ON PRIOR TO ASSEMBLY. IF POSSIBLE, ASSEMBLE THE LIFT ON A FLAT, LEVEL SURFACE. LIFT MUST BE LEVEL WHEN IT IS INSTALLED FOR THE LIFT TO OPERATE PROPERLY. EXTENSION LEGS ARE AVAILABLE FROM YOUR AUTHORIZED HARBOR MASTER DEALER. GREASE THE ROLLERS AFTER ASSEMBLY AND THROUGHOUT THE SEASON FOR BEST USE.

STEP 1:

BOLT AN ELITE FOOTPAD TO THE LEG POST USING (4) 1/2 X 2-1/2 BOLTS & (4) 1/2 NYLOCK NUTS.



PLACE BOLT THROUGH
FOOTPAD AND LEG.



THREAD THE 3/8" NYLOCK NUT
ONTO THE BOLT.



TIGHTEN THE BOLT & NYLOCK NUT. LEAVE
LOOSE ENOUGH FOR THE FOOTPAD TO BE
ABLE TO PIVOT. MAKE SURE THE BOLT IS
THROUGH THE NYLON ON THE NYLOCK NUT.

STEP 2:

SLIDE LEGS INTO THE SIDEFAMES & INSERT LEG PINS & HAIR PIN RETAINER.
SET ALL OF THE LEGS TO THE SAME HEIGHT WHILE BUILDING THE LIFT. USE
EITHER



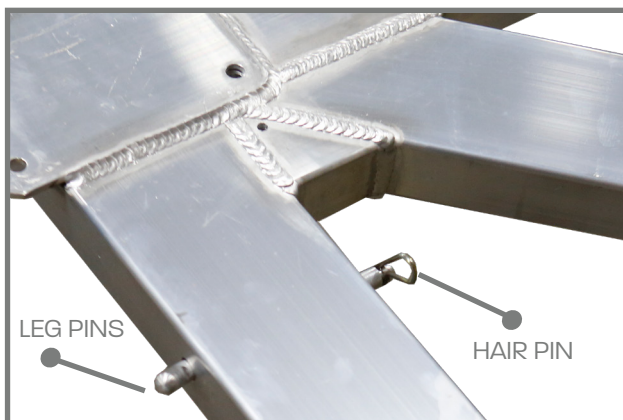
SLIDE THE LEG INTO THE SIDEFAME.



ADJUST LEGS TO DESIRED HEIGHT.
EACH HOLE ON THE LEG IS 6" APART.
HOLES ON SIDE FRAME ARE 3" APART. THE
LIFT IS ADJUSTABLE IN 3" INCREMENTS.



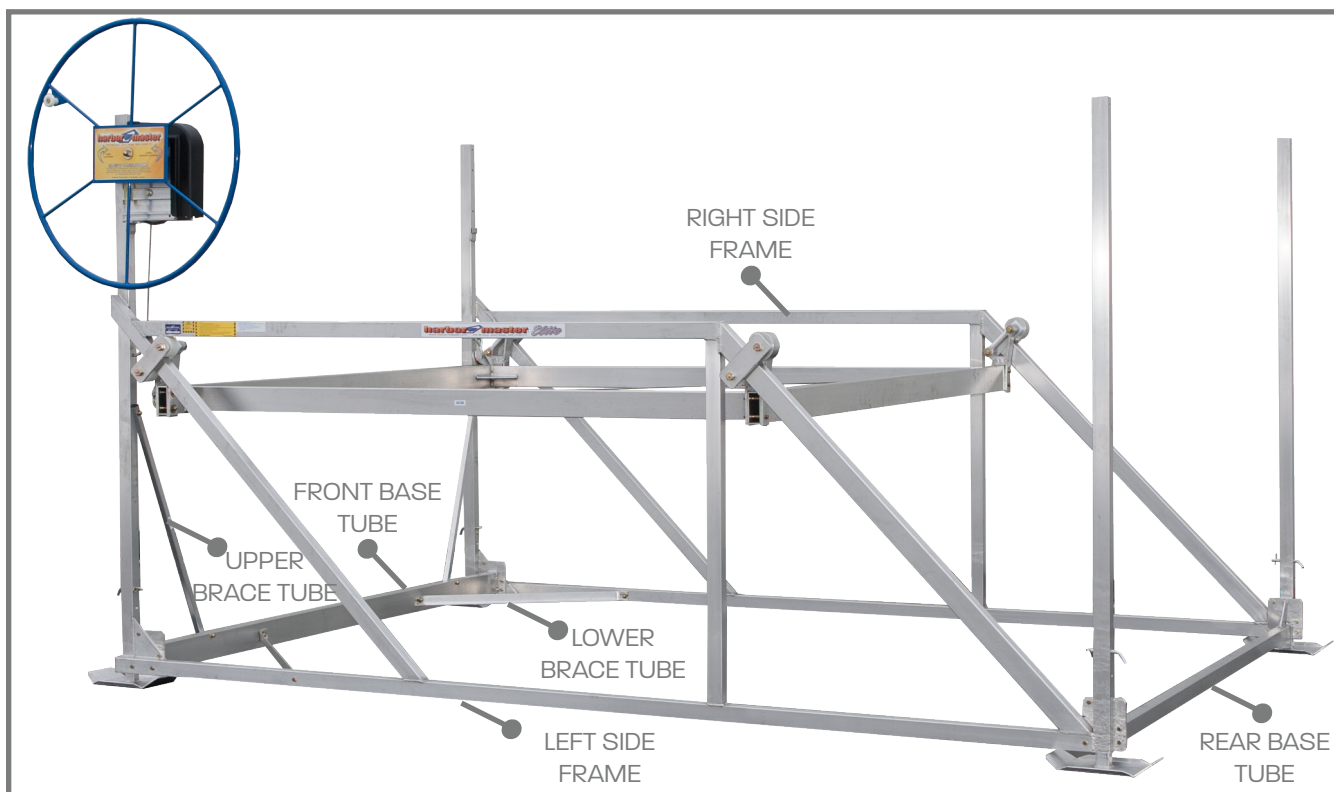
WHEN DESIRED HEIGHT OF THE LEGS IS FOUND, PLACE LEG PIN THROUGH THE SIDEFAME AND THROUGH THE HOLE ON THE LEG.



PUT THE HAIR PIN RETAINER ON THE LEG PIN TO SECURE THE LEG PIN. IF YOU NEED TO ADJUST THE LIFT LEGS, PULL THE LEG PIN AND HAIR RETAINER, ADJUST THE LEG, THEN PUT THE LEG PIN & HAIR PIN BACK THROUGH THE SIDEFAME AND LEG.

STEP 4:

STAND THE SIDE FRAMES UPRIGHT WITH THE WINCH POST FACING TOWARDS THE INSIDE OF THE LIFT. BOLT THE FRONT AND REAR BASE TUBES TO THE SIDE FRAMES. (FRONT BASE TUBE HAS HOLES IN THE SIDE OF THE BASE TUBE.) MATCH THE BOLT PATTERN ON THE BASE TUBE TO THE PLATE WELDED TO THE SIDE FRAME.



STEP 4:

STAND THE SIDE FRAMES UPRIGHT WITH THE WINCH POST FACING TOWARDS THE INSIDE OF THE LIFT. BOLT THE FRONT AND REAR BASE TUBES TO THE SIDE FRAMES. (FRONT BASE TUBE HAS HOLES IN THE SIDE OF THE BASE TUBE.) MATCH THE BOLT PATTERN ON THE BASE TUBE TO THE PLATE WELDED TO THE SIDE FRAME.



BOLT THE BASE TUBES TO THE SIDE FRAME:

FRONT BASE TUBES USE (4) 3/8" X 2-3/4" BOLTS, (4) 3/8" X 1" BOLTS, & (8) 3/8" NYLOCK NUTS.

REAR BASE TUBES USE (2) 3/8" X 2-3/4" BOLTS, (6) 3/8" X 1" BOLTS, & (8) 3/8" NYLOCK NUTS.

STEP 5:

INSTALL THE UPPER BRACE TUBES:

HME 15100, 20100, 30108, & 30120 TOP BOLTS: (2) 3/8" X 4" BOLTS, (2) 3/8" NYLOCK NUTS, & (2) 3/8" WASHERS.

HME 40114 & 40120 TOP BOLTS: (2) 3/8" X 6" BOLTS, (2) 3/8" NYLOCK NUTS, & (2) 3/8" WASHERS.

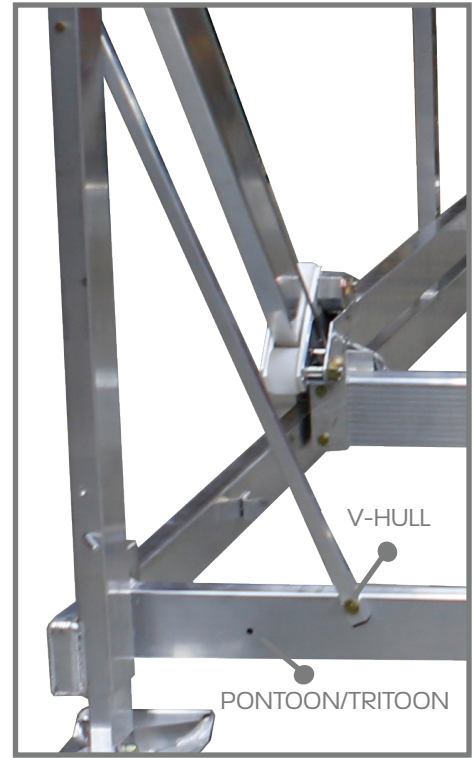
ALL LIFT BOTTOMS: (2) 3/8" X 3-1/2" BOLTS, (2) 3/8" NYLOCK NUTS, & (2) 3/8" WASHERS.



USE WASHERS AGAINST THE
BRACE TUBE.



THE BRACE TUBE CAN BE PLACED INTO TWO DIFFERENT POSITIONS DEPENDING
ON WHETHER THE BOAT IS A V-HULL OR A PONTOON/TRITON.



STEP 6:

INSTALL THE UPPER BRACE TUBES USING (4) 3/8" 2-3/4" BOLTS,
(4) 3/8" WASHERS, & (4) 3/8" NYLOCK NUTS.

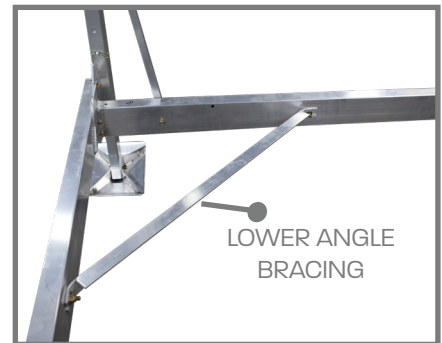
NOTE: HME 15100 & 20100 WILL NOT HAVE LOWER ANGLE BRACING.



BEND THE TABS ON THE LOWER
BRACING IN TO PROPERLY FIT THE
BRACING ON THE SIDEFAME AND
THE FRONT BASE TUBE.



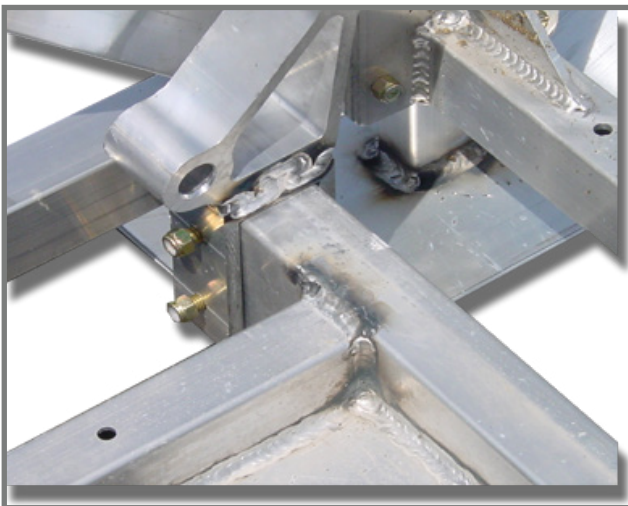
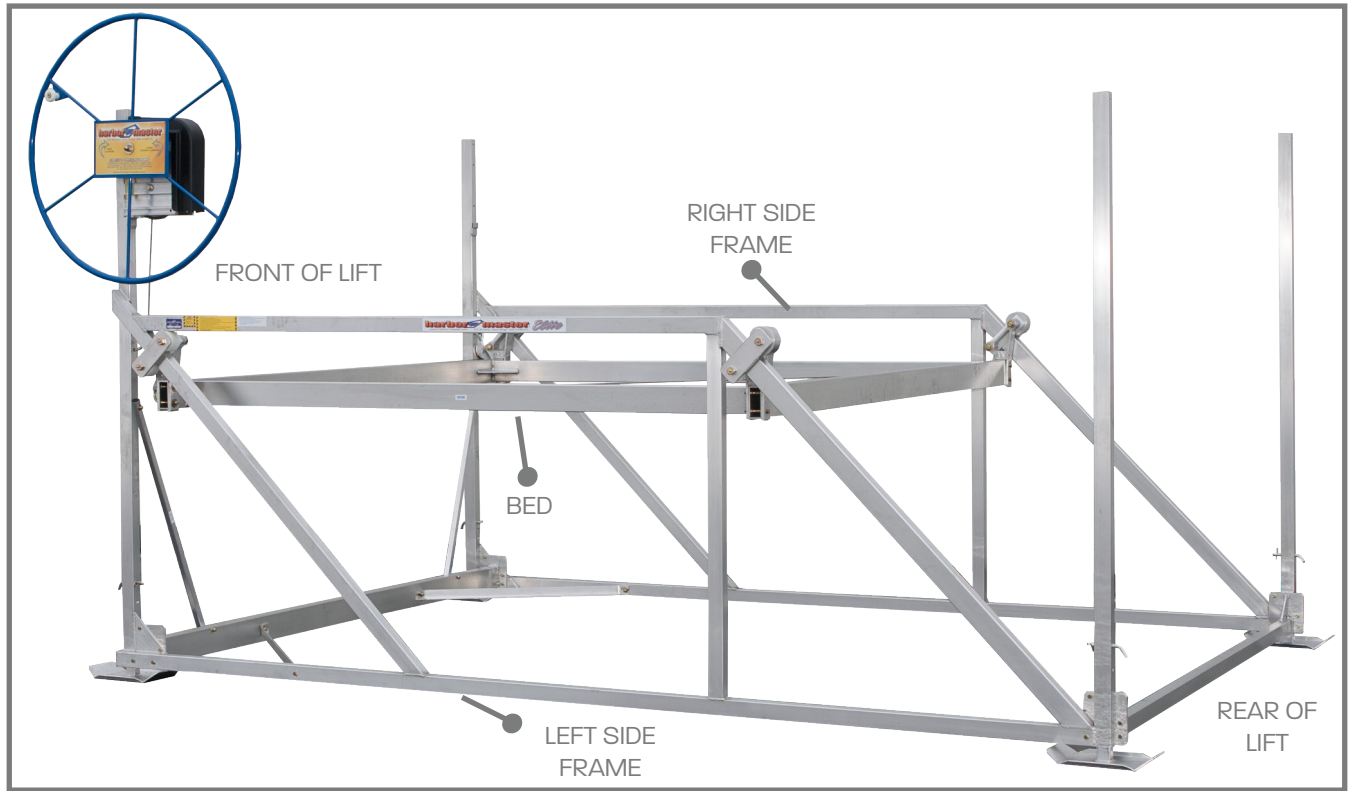
USE (4) 3/8" X 2-3/4" BOLTS, (4) 3/8"
WASHERS, & (4) 3/8 NYLOCK NUTS.



TIGHTEN THE NUTS AND BOLTS UN-
TIL THE LOWER BRACING IS FIRMLY
SECURE. DO NOT OVERTIGHTEN.

STEP 7:

PLACE THE BED INTO THE SIDEFAMES. BOLT ON THE ROLLER EXTRUSIONS.



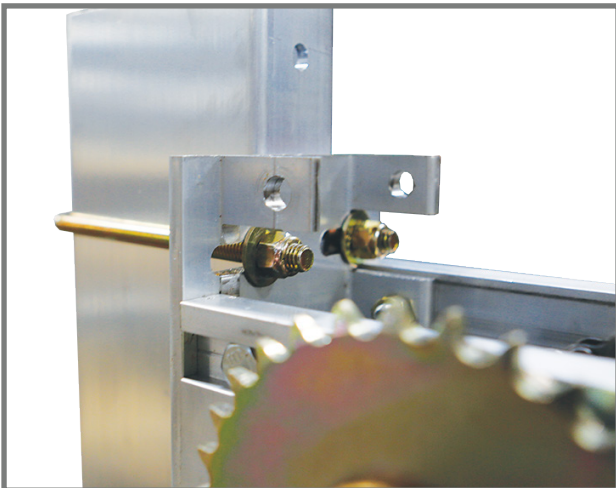
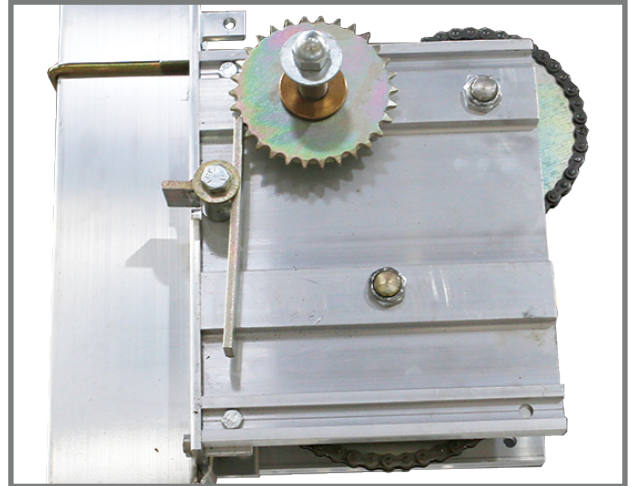
REAR EXTRUSIONS USE (4) 7/16" X 3-1/2" BOLTS & 7/16" NYLOCK NUTS WITHOUT WASHERS.



FRONT EXTRUSIONS USE (2) UBOLTS WITH WELDED WASHERS, (2) WASHERS ON THE BACK, & (2) NYLOCK NUTS

STEP 8:

BOLT THE WINCH TO THE SIDEFAMES.



SLIDE THE WINCH INTO THE TAB WELDED ON THE SIDEFAME WINCH POST. UBOLT THE TOP OF THE WINCH TO THE SIDEFAME WINCH POST.

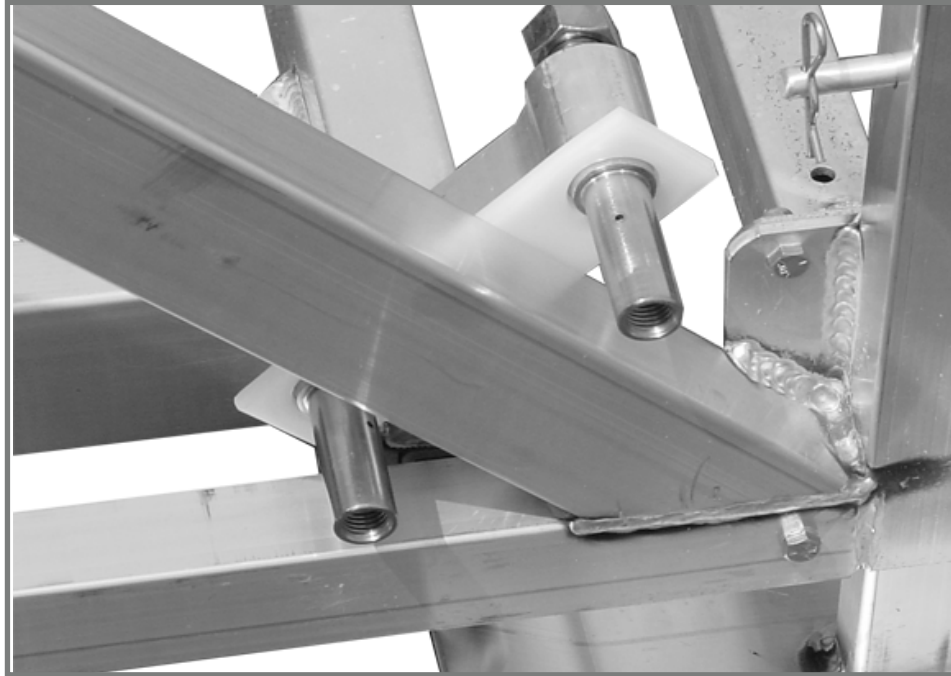
HME 15100, 20100, 30108, & 30120 USE A 3/8" X 3" UBOLT WITH (2) 3/8" FLANGE NUTS.

HME 40114 & 40120 USE A 3/8" X 5-1/2" UBOLT WITH (2) 3/8" FLANGE NUTS.

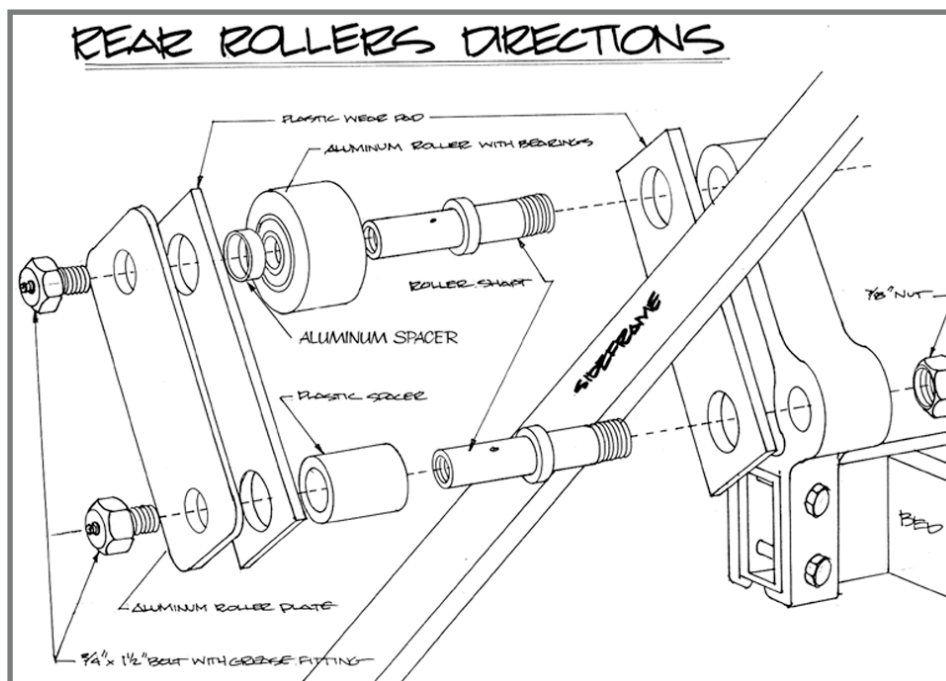
NOTE: HME 15100 USES B1502 WINCH. HME 20100 USES B2503 WINCH. HME 30108, 30120, 40114, & 40120 USE HARBOR MASTER ALUMINUM WINCH.

STEP 9:

BOLT THE ROLLERS ON THE FRONT AND REAR EXTRUSIONS.



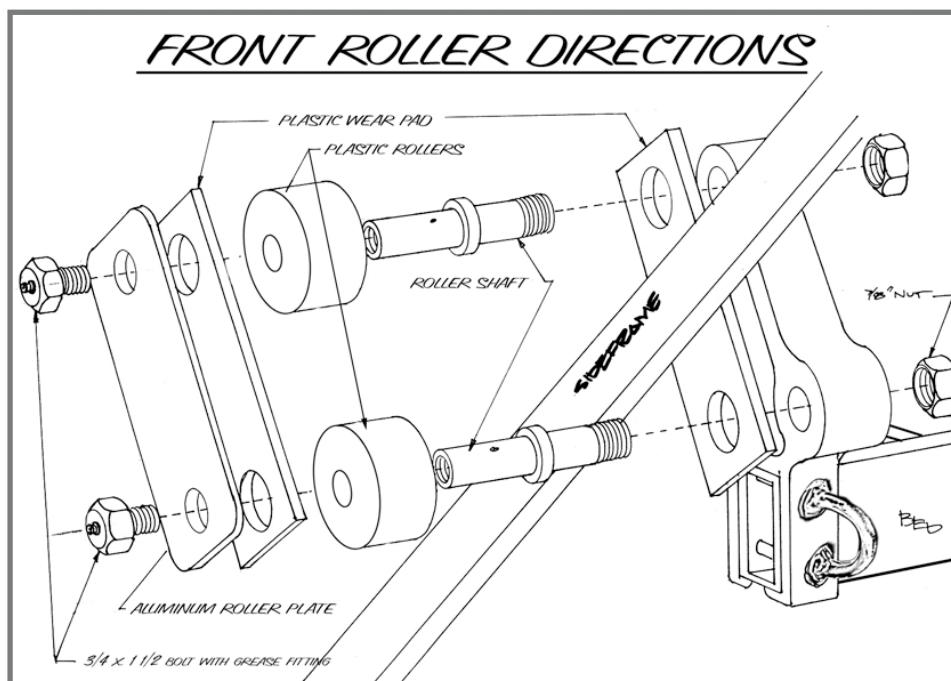
BOLT THE ROLLER SHAFTS TO THE ROLLER EXTRUSIONS WITH A PLASTIC WEAR PAD BETWEEN THE SIDEFRAE AND THE EXTRUSION ON ALL OF THE CORNERS.



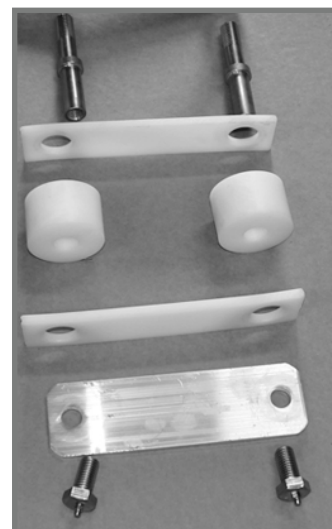
INSTALL THE ALUMINUM ROLLER & SPACER ON THE TOP ROLLER SHAFT. PLACE THE PLASTIC SPACER ON THE BOTTOM ROLLER SHAFT.



REAR CORNERS
OF THE LIFT.



INSTALL THE ALUMINUM ROLLER & SPACER ON THE TOP ROLLER SHAFT. PLACE THE PLASTIC SPACER ON THE BOTTOM ROLLER SHAFT.



FRONT CORNERS
OF THE LIFT.

STEP 10:

INSTALL THE UBOLTS, THE PULLEYS, & THE WINCH CABLE.

NOTE: DO NOT OVERTIGHTEN THE UBOLTS. TIGHTEN SO THERE ARE TWO THREADS OF THE UBOLT SHOWING THROUGH THE NYLOCK NUT.

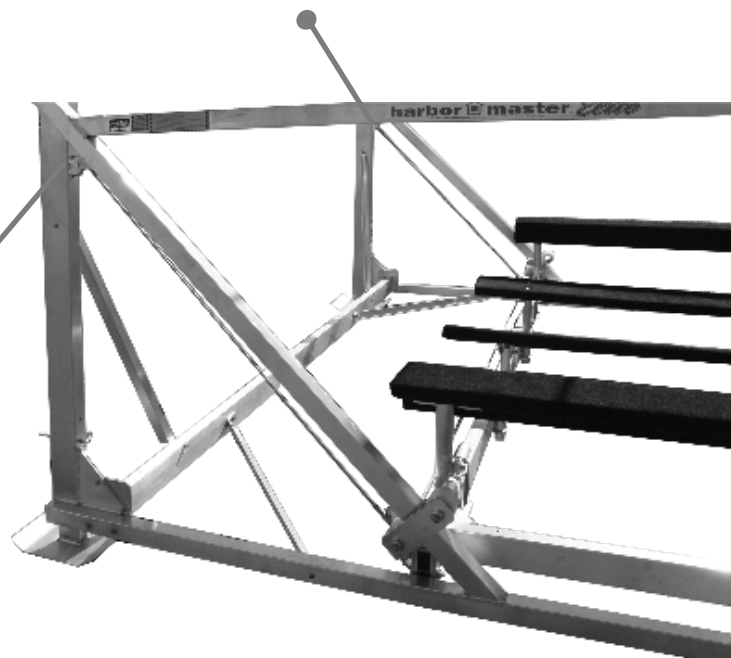
USE UBOLT WITH CABLE LOOP END THROUGH IT.
USE WASHERS & NYLOCK NUTS.



USE SHACKLE & PULLEY SIDE ASSEMBLY ON THE BED UBOLTS. INSTALL THE SHACKLES AS SHOWN TO PREVENT BINDING.

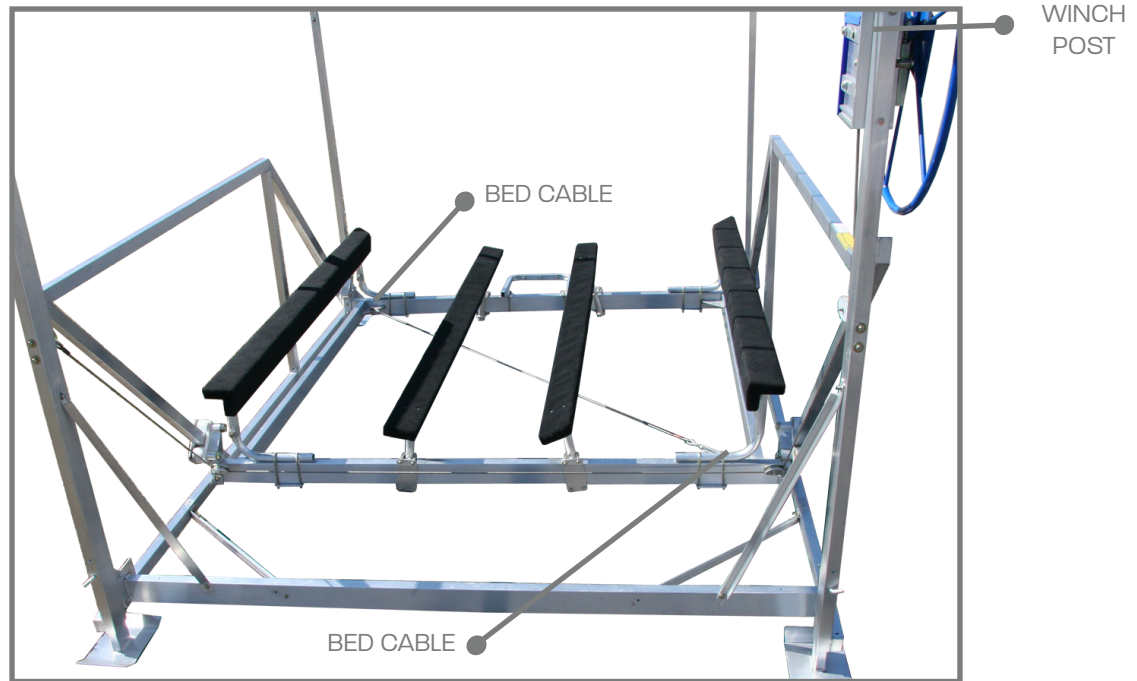


USE UBOLT WITH PULLEY SIDE ASSEMBLY UNDER WINCH. USE WASHERS UNDER NUTS.

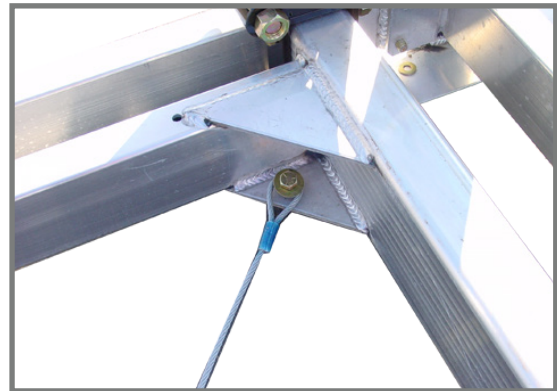


STEP 11:

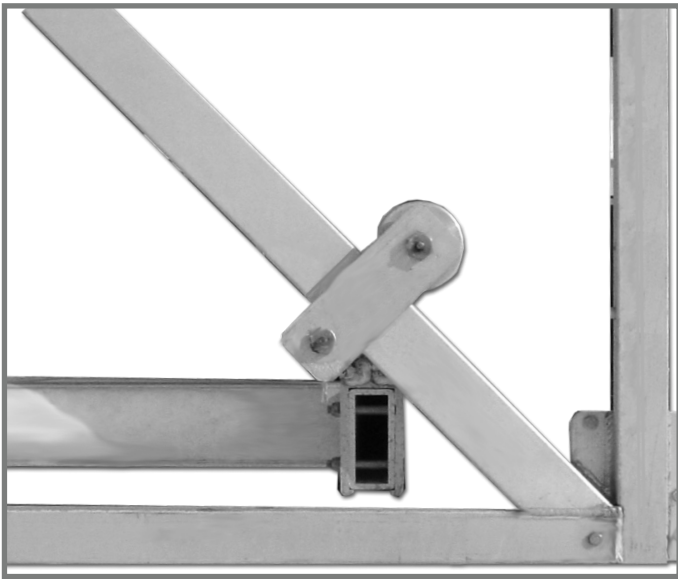
(FOR HME 30108, 30120, 40114, 40120 ONLY) BOLT THE BED CABLE TO THE BED. RUN THE CABLE FROM THE CORNER CLOSEST TO THE WINCH TO THE OPPOSITE CORNER OF THE BED.



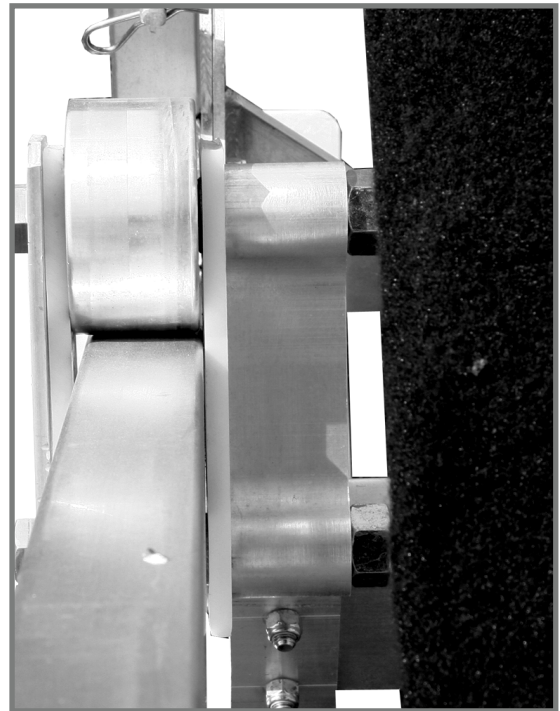
ATTACH THE END WITH THE TURNBUCKLE TO THE BED (BELOW THE WINCH.) LOOSEN THE TURNBUCKLE TO ATTACH THE LOOP END.



ATTACH THE LOOP END USING THE 1/2" X 1-1/2" BOLT, 1/2" WASHER, AND 1/2" NYLOCK NUT. TIGHTEN THE TURNBUCKLE HAND TIGHT.



GREASE THE UPPER REAR ROLLERS WITH A WATERPROOF MARINE GREASE BEFORE USE. FILL UNTIL THE GREASE IS VISIBLE. REPEAT DURING THE BOATING SEASON FOR BEST USE.



ENSURE THE REAR ROLLERS ARE PROPERLY ALIGNED & RIDE FLAT ON THE SIDEFRAMES. LOOSEN BOLTS TO ADJUST AND RETIGHTEN.